


UKS-SM144-410-OPT
410W all black

No of Cells **108**
 Cells Size **182**

Module Dimensions
 1724 x 1134 x 30 mm



MCS
 EC4
 Tigo

Innovation Measure Tigo optimised for a 45% ECO4 funding uplift. Ofgem approved.


TOPCon Cell | Bifacial

UKS-S108/M10N-xxx-BG-OPT
UKS-S108/M10N-xxx-BG

415- 435W

No of Cells **108**
 Cells Size **182**

Module Dimensions
 1724 x 1134 x 30 mm




MCS
 EC4
 Tigo

Innovation Measure Tigo optimised for a 45% ECO4 funding uplift. Ofgem approved.

UKS-SM144-410-OPT
410W all black

No of Cells **108**
 Cells Size **182**

Module Dimensions
 1724 x 1134 x 30 mm




Bifacial

UKS-S144/M6H-xxx-BG
410W all black

No of Cells **144**
 Cells Size **166**

Module Dimensions
 2095 x 1039 x 35 mm



Images may not be to scale or reflect the stated number of cells. Technical specifications are subject to change.



N = N type cell | BG = Bifacial

UKSOL

Solar Modules

Product List

A british brand of solar modules as certified by MCA & TÜV-SÜD with a 30 years british warranty

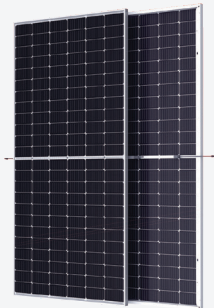
TOPCon Cell | Bifacial

UKS-S120/M10N-xxx-BG
465 - 485W

No of Cells **120**

Cells Size **182**

Module Dimensions
 1909 x 1134 x 30mm

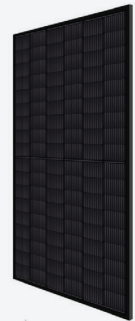


UKS-S144/M10H-xxx
525-550W all black

No of Cells **144**

Cells Size **182**

Module Dimensions
 2279 x 1134 x 35mm



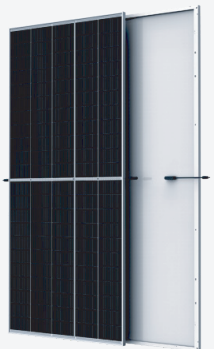
All UKSOL PV modules come with a 30 year British performance warranty and a 12 year British product warranty all supported from the UK.

UKS-S144/M10H-xxx
530 - 555W

No of Cells **144**

Cells Size **182**

Module Dimensions
 2279 x 1134 x 30 or 35mm



Bifacial

UKS-S110/M12H-xxx-BG
545 - 555W

No of Cells **110**

Cells Size **210**

Module Dimensions
 2384 x 1096 x 35mm



Images may not be to scale or reflect the stated number of cells. Technical specifications are subject to change.



N = N type cell

BG = Bifacial

UKSOL Solar Modules

A British brand of solar modules as certified by
MCA & TÜV-SUD with a 30 years British warranty



TOPCon Cell | Bifacial

UKS-S144/M10N-xxx-BG
555-585W

No of Cells **144**

Cells Size **182**

Module Dimensions
2279 x 1134 x 30mm

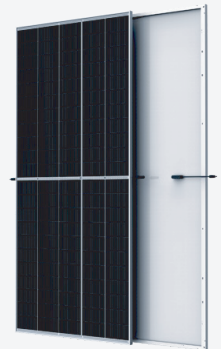


UKS-S120/M12H-xxx
590 - 605W

No of Cells **120**

Cells Size **210**

Module Dimensions
2279 x 1134 x 35mm



Bifacial

UKS-S120/M12H-xxx
590 - 605W

No of Cells **120**

Cells Size **210**

Module Dimensions
2172 x 1303 x 35mm



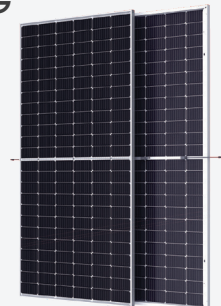
Bifacial

UKS-S132/M12H-xxx-BG
650 - 670W

No of Cells **132**

Cells Size **210**

Module Dimensions
2384 x 1303 x 35mm



Images may not be to scale or reflect the stated number of cells. Technical specifications are subject to change.



N = N type cell

BG = Bifacial

UKSOL

Solar Modules

A british brand of solar modules as certified by MCA & TUV-SUD with a 30 years british warranty

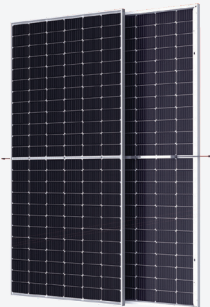
UKS-S144/M10N-xxx-BG
555-585W

No of Cells **144**

Cells Size **182**

Module Dimensions

2279 x 1134 x 30mm



TOPCon Cell | Bifacial

UKS-S132/M12H-xxx-BG
700W

No of Cells **132**

Cells Size **210**

Module Dimensions

2384 x 1303 x 35mm

High output Heterojunction (HJT) technology

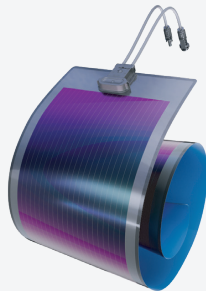


> UKSOL Lightweight Flexible Solar Solutions >>

Flexible Thin Film
50 - 55W

Module Dimensions

436 (W) x 2000 (L) mm



Flexible solar can installed directly to roof surfaces.

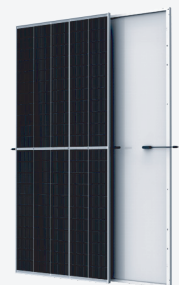
MWT Mono PERC Flexible Module
365-385W

No of Cells **126**

Module Dimensions

1840 x 1040 x 2.5mm

No glass. Bends. Hard wearing. Good for transport.



Images may not be to scale or reflect the stated number of cells. Technical specifications are subject to change.



N = N type cell

BG = Bifacial